

Shoppes at Salem

FOR LEASE

Route 28 • SALEM, NH 03079

AVAILABLE

2,279 SF

up to

16,576 SF

Second level space
also available

Property Highlights

Join newly signed Trek Bicycle, Balducci's wood fired pizza & wings, White Street Paint & Hardware and Birches Charter Academy.

Signalized entrance with the NH State Liquor Store (#2 in sales).

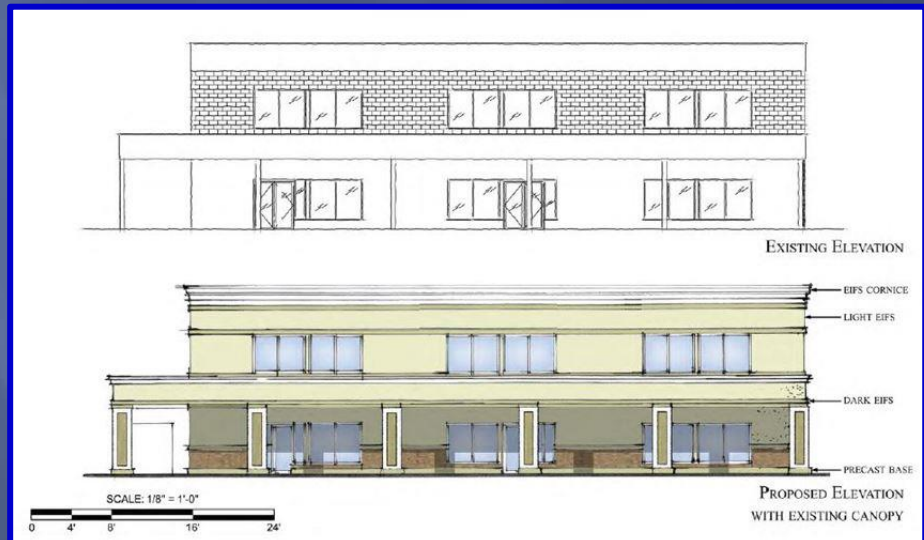
Excellent visibility.

Ample parking.

Pylon availability.



PROPOSED FAÇADE UPGRADE



**AMERICAN RETAIL
PROPERTIES**

2 Oliver Street, Suite 906
Boston, MA 02110
617.778.6500

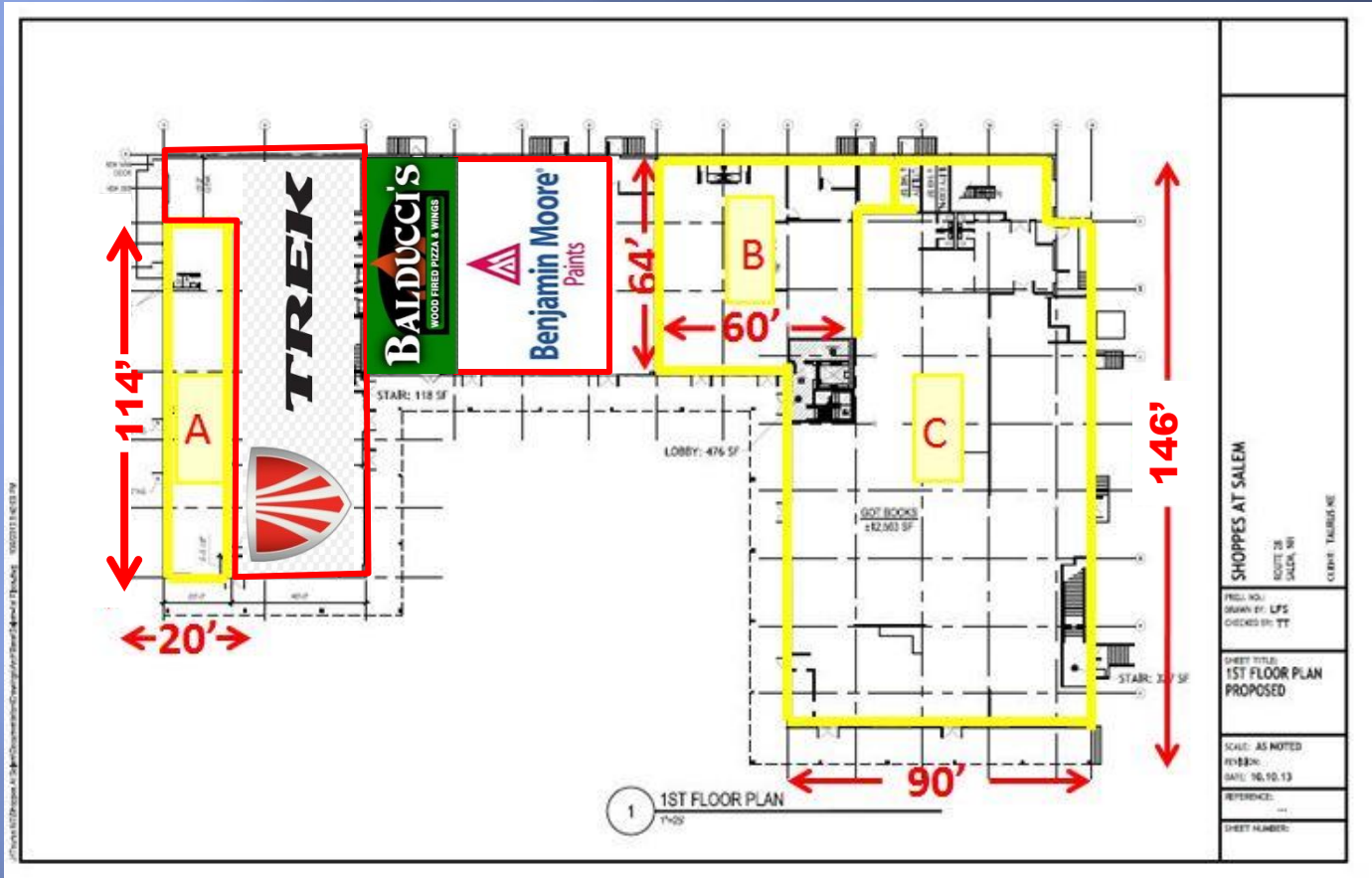
www.americanrp.com

The information above has been obtained from sources believed reliable. While we do not doubt its accuracy, we have not verified it and make no guarantee, warranty or representation about it. It is your responsibility to independently confirm its accuracy and completeness. Any projections, opinions, assumptions or estimates used are for example only and do not represent the current or future performance of the property. The value of this transaction to you depends on tax and other factors, which should be evaluated by your tax and financial advisors. You and your advisors should conduct a careful, independent investigation of the property to determine, to your satisfaction, the suitability of the property for your needs.

Shoppes at Salem

FOR LEASE

Route 28 • SALEM, NH 03079



For Information Contact:

David Nugent:

dnugent@americanrp.com

Available for Lease

Unit A: 2,279 SF

Unit B: 4,421 SF

Unit C: 12,155 SF (SUDDIVIDALE)

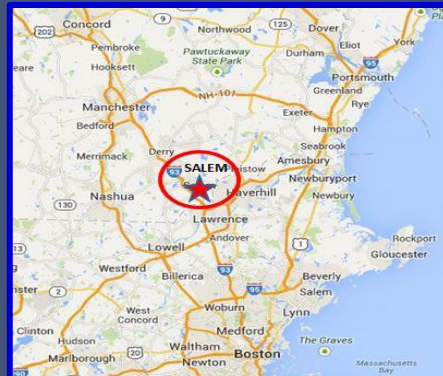
AMERICAN RETAIL PROPERTIES

2 Oliver Street, Suite 906

Boston, MA 02110

617.778.6500

www.americanrp.com



The information above has been obtained from sources believed reliable. While we do not doubt its accuracy, we have not verified it and make no guarantee, warranty or representation about it. It is your responsibility to independently confirm its accuracy and completeness. Any projections, opinions, assumptions or estimates used are for example only and do not represent the current or future performance of the property. The value of this transaction to you depends on tax and other factors, which should be evaluated by your tax and financial advisors. You and your advisors should conduct a careful, independent investigation of the property to determine, to your satisfaction, the suitability of the property for your needs.